

# BIG SQUARE



## DIMENSIONS

- Ground space: 28 m<sup>2</sup>
- Dimensions while driving (L x W x H): 6,61 m x 2,55 m x 3,20 m
- Dimensions when set up, (L x W x H): 6,25 m x 6,00 m x 4,50 m

## WEIGHT

- Cube weight empty with trailer: approx. 2.500 kg
- max. permitted weight: 3.500 kg
- weight trailer only: 600 kg

## LOCATION

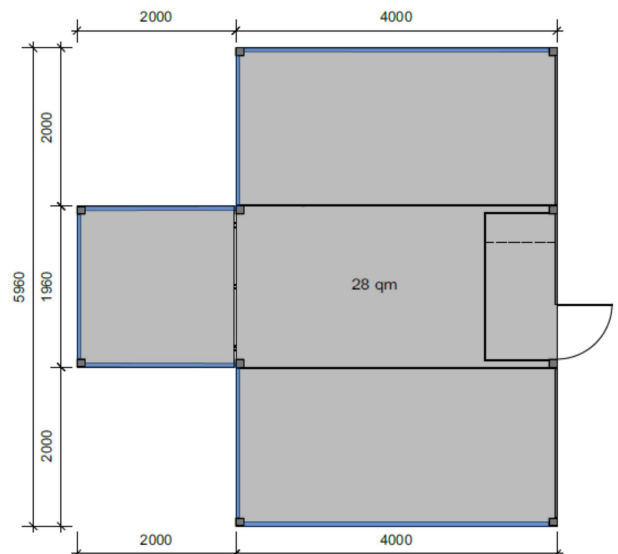
- Required space for build up: approx. 10 m x 10 m
- passable surface, max. 5% gradient
- req. electrical connection: min. 230 V Schuko

## HANDLING

- Assembly and disassembly: 2 persons
- Power connection: 230 V Schuko for assembly and disassembly
- Requirements towing: 3,5t traction; 150 kg bearing load

## AVANTAGES

- Fast assembly and disassembly
- Long lifetime due to solid construction
- Quick and easy interchangeable branding
- High long distance impact
- 365 days operationally



Sideview

